



Material Handling Equipment

www.techmachi.in



Contact Number: +91-7678272743, +91-9716000316

WWW.TECHMACHI.IN

1 Ton Electric Forklift: TIL-10

- Reduced energy consumption
- Longer hours of forklift operation
- Compact design
- Reliable high performance



TECHNICAL SPECIFICATIONS:

Model No.	TIL-10		
Load Center Distance	500mm	Rated lifting capacity	1000kg
Inclination	5-10°	Maximum Lifting Height	300-4500 mm
Height of roof guard from ground	2100mm	Gradeability	15°
Fork Length	1070mm	Fork Width	900mm
Wheelbase front wheel	500-8mm	Wheelbase	1230mm
Battery Rated Voltage	60v	Rear wheel	400-8mm
Weight including battery	1.8kg	Capacity	325AH
Charging time	4-5h	Operating Hours	6h
Increase Motor Power	1200w	Drive motor Power	2000w
Min. Ground Clearance	40mm	Dimension	1900x950x2200mm

1.5 Ton Electric Forklift: TIL-15

- Reduced energy consumption
- Longer hours of forklift operation
- Compact design
- Reliable high performance



TECHNICAL SPECIFICATION:

Model No.	TIL-15		
Travel Motor	3kw AC Super Quiet	Lift Motor	4kw AC First stage source collecting gear pump
Drive Axle	1:41 (100 Pipe Diameter) cast square steel slab bridge (wear-resistant type)	Steering rear Axle	Thickened double steel plate bridge
Steering	Hydraulic Power Assist (Microcomputer Control)	Tires (Class A Solid)	Front 650-10, rear 500-8(reinforced A Class)
Door Frame	Double Oil cylinder (Special Steel for forklift) (Super wear-resistant rolling cylinder)	Counter Weight	Iron slag+cement
Self-Respect	2200 kg	Rated Load	1500kg
Battery Quantity	5 Pieces (Lead-acid battery)	Battery Capacity	650Ah
Charging Voltage	220V	Output Voltage	60v
Charging Time	4-5h (Six-segment intelligent full-filled self-stop)	Battery Life	7-8 Hrs
Raised	3m (Customizable)	Heightofmachine	2.15m (can be lowered)
Fork	1.07m (one time forming by anti-wearing forging)	Breaking Method	Oil brake big handbrake
Car Paint	Advanced Car Paint	Body size	2.2x1.2x2.15m (Excluding fork length)

2 Ton Electric Forklift: TIL-20

- Reduced energy consumption
- Longer hours of forklift operation
- Compact design
- Reliable high performance



TECHNICAL SPECIFICATION:

Model No.	TIL-20		
Travel Motor	4kw AC Super Quiet	Lift Motor	5kw AC First stage source collecting gear pump
Drive Axle	1:41 (100 Pipe Diameter) cast square steel slab bridge (wear-resistant type)	Steering rear Axle	Thickened double steel plate bridge
Steering	Hydraulic Power Assist (Microcomputer Control)	Tires (Class A Solid)	Front 650-10, rear 500-8(reinforced A Class)
Door Frame	Double Oil cylinder (Special Steel for forklift) (Super wear-resistant rolling cylinder)	Counterweight	Iron slag+cement
Self-Respect	2700 kg	Rated Load	2000kg
Battery Quantity	10 Pieces (Lead-acid battery)	Battery Capacity	650Ah
Charging Voltage	220V	Output Voltage	60v
Charging Time	5-6h (Six-segment intelligent full-filled self-stop)	Battery Life	7-8Hrs
Raised	3m (Customizable)	Height of machine	2.15m (can be lowered)
Fork	1.07m (one time forming by anti-wearing forging)	Breaking Method	Oil brake+big handbrake
Car Paint	Advanced Car Paint	Body size	2.4x1.2x2.15m (Excluding fork length)

3 Ton Electric Forklift: TIL-30

- Reduced energy consumption
- Longer hours of forklift operation
- Compact design
- Reliable high performance



TECHNICAL SPECIFICATION:

Model No.	TIL-30		
Travel Motor	7.5kw AC Super Quiet	Lift Motor	11kw AC First stage source collecting gear pump
Drive Axle	1:41 (100 Pipe Diameter) cast square steel slab bridge (wear-resistant type)	Steering rear Axle	Thickened double steel plate bridge
Steering	Hydraulic Power Assist (Microcomputer Control)	Tires (Class A Solid)	Front 23"9-10 rear 18"7-8(reinforced A Class)
Door Frame	Double Oil cylinder (Special Steel for forklift) (Super wear-resistant rolling cylinder)	Counterweight	Pure Iron
Self-Respect	3600 kg	Rated Load	3000kg
Battery Quantity	10 Pieces (Lead-acid battery)	Battery Capacity	650ah
Charging Voltage	220V	Output Voltage	60v
Charging Time	5-6h (Six-segment intelligent full-filled self-stop)	Battery Life	7-8
Raised	3m (Customizable)	Height of machine	2.15m (can be lowered)
Fork	1.07m (one time forming by anti-wearing forging)	Breaking Method	Oil brake+big handbrake
Car Paint	Advanced Car Paint	Body size	2.5*1.2*2.15m (Excluding fork length)

Dual Mast Aluminium Aerial Lift

Lifting balance/safe and reliable/simple operation

- Using of high strength high-quality aluminum alloy material
- Attractive appearance, small size, light weight, it can be dragged to walk by one person
- The platform is equipped with safety rope and safety protection device
- The equipment is equipped with remote control box, it can be controlled by the remote control upward and downward
- The equipment adopts polyurethane tyres, with small walking resistance, low sound and no damage to the ground
- The products can be divided into single mast, double mast, three mast and four mast according to the number of columns



TECHNICAL SPECIFICATION:

Model No.	TIL-Dual Mast Aerial Lift
Lifting Height	6m/8m/10m/12m/14m
Working Height	8m/10m/12m/14m/16m
Load Capacity	150kg/120kg/250kg/300kg
Power	1.1kw
Weight	2750kg
Dimension	2655*1350*2000 mm
Application	Warehouse/Workshop/Construction site

Single Mast Aluminium Aerial Lift

When it comes to lifting equipment, one of the most important factors to consider is balance. This is especially true for mobile lifting platforms that need to be easily maneuverable, safe, and reliable. Here are some features of a high-quality lifting platform that prioritizes balance:

- High-Quality Aluminum Alloy Material
- Attractive Appearance, Small Size, and Light Weight
- Safety Rope and Protection Device
- Remote Control Box
- Polyurethane Tyres
- Different Number of Columns



TECHNICAL SPECIFICATION:

Model No.	TIL-Single Mast Aerial Lift
Lifting Height	4m/6m/8m/10m
Working Height	6m/8m/10m/12m
Load Capacity	100kg/130kg/150kg
Power	1.1kw
Weight	280kg
Dimension	1300*800*1980 mm
Application	Warehouse/Workshop/Construction site

Electric Loading and Unloading Lifter

TECHNICAL SPECIFICATION:

Product Type	Portable Electric Lifter
Wheel Diameter	19cm
Fork	Length 78, Outer Width 47 Inner Width 35
Battery	Ternary Lithium Battery
Working Fork	Outer Width is 70 and Inner Width is 60cm
Overall Size	178x70x90cm



Electric Loading and Unloading Drum Lifter

TECHNICAL SPECIFICATION:

Product Type	Electric Drum Lifter
Lifting Height	169cm
Dimension	133x70z90 cm
Bottom Fork Dimension	60x70cm
Load Capacity	400kg

Mounted Boom Lift Trailer

TECHNICAL SPECIFICATION:

Product Type	Mounted Boom Lift Trailer
Boom Lift Type	Articulated Boom
Brand	TIL
Maximum Ground Bearing Pressure	The maximum pressure exerted while the machine is in its working configuration and supporting its
Power Source	Hydraulic, Diesel, Electric
Country of Origin	Made in India



Technical parameter	Unit	TMZ16
Maximum working height	M	18
Maximum platform height	M	16
Maximum load	Kg	200
Maximum working distance	M	9.5
Platform size (length*width*height)	M	1.2*0.8*1.1
Transport length (length*width*height)	M	7.0*1.73*2.2
Leg span (longitudinal*transverse)	M	4.2*4.3
Rotation angle of turn table (continuous)	-	360
Platform rotation angle	-	160
Type	-	215/75R16C
Control		Hydraulic control
Gross	Kg	2900
Power configuration:		
1 Diesel engine power	HP	12
2 Direct current pumping station	KW	24V/4.4KW

Towable Hydraulic Scissor Lift: 8-16Mtr.

Applicable Industries

- Hotels
- Building Material Shops
- Machinery Repair Shops
- Manufacturing Plant
- Food & Beverage Factory
- Farms
- Construction works
- Energy & Mining



TECHNICAL SPECIFICATION:

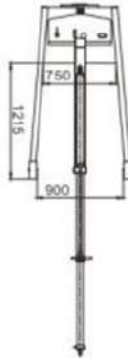
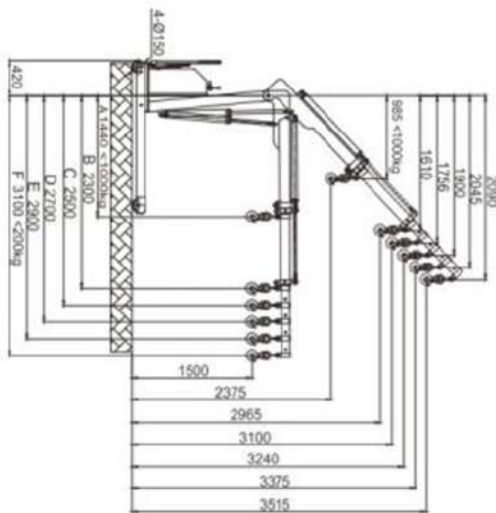
Product name	Scissor Lift Platform
Table Size	2100*930MM
Weight	300 KG
Warranty of core components	6 Months
Core Components	Pressure vessel, Motor, Pump
Lift Mechanism	Scissor Lift
Power	24V/4.5KW
Min. Lifting Height	4M
Overall Dimensions	2250*1060*1300MM
Type	Hydraulic Cylinder Drive
Keywords	Hydraulic Vehicle-mounted Elevating Platform
Power	Optional
Key word	Battery Scissors Lift
Load capacity	300kg/customized
Lift Drive	AC Power
Lifting system	Electric Hydraulic
Lifting height	4-18 Meter
Package Type	Container
Lift Drive / Actuation	Electric Motor

Semi-electric Single Arm Crane

The single arm crane has the following advantages:

- Replace the forklift with a small mobile crane.
- Wide range of lifting angles, adjustable telescopic and ultra-long boom.
- Suitable for operations in areas that are difficult for forklifts to enter. The legs are foldable and the packaging volume is small for easy transportation.

Note: The load attenuation curve must be considered during use to ensure safety.



TECHNICAL SPECIFICATION:

Holed		A	B	C	D	E	F
0°	Boom length (mm)	1440	2300	2500	2700	2900	3100
	Rated load (Kg)	1000	342	290	250	220	200
40	Boom length (mm)	985	1610	1756	1900	2045	2090
	Rated load (Kg)	1000	565	430	345	290	250
Outrigger inner width	(mm)	985					
Outrigger width	(mm)	1170					
Net weight	(Kg)	466					
Front Wheel Size	(mm)	Ø150x50					
Training wheel Size	(mm)	Ø75x30					

Hand Stacker Drum Lifter & Tilter

The column of the body is made of C-Shaped Steel, the piston rod of the oil cylinder is a standard 30mm hard chrome-plated solid rod for one ton, and the high-quality oil seal of the whole vehicle can eradicate the criticism of oil leakage. Smooth, speed controllable. The pulley transmission is used between the masts, so that there is no swing after the masts is lifted.

- Suitable for various types of loading, unloading, lifting operation.
- It has the characteristics of stable walking, flexible operation and fast.
- It is light and flexible, can be operated by one person.

TECHNICAL SPECIFICATION:

Product Type	Olecranon Type
Rated Load	350kg
Drum Size	55 Gallon
Lift Height	1350mm
Net Weight	190kg



Manual Drum Carrier

Easily handle 30- or 55-gallon drums in steel, plastic, or fiber. It is suitable for handling oil in factories, warehouse, stations, docks etc. Chemical raw material etc. especially suitable for use in flammable and explosive places and flat and solid bottom surface. This machine is easy to operate, safe to use and easy to maintain. It is a new type of ideal drum container handling machine.

- Easy lifting by foot through a special hydraulic oil cylinder, it should have the function of self-grabbing and locking when lifting, and it will automatically open when the oil is put bottom.
- It can enter scales with a depth of 550mm, suitable for scales with a width of 580mm and a height of 180mm.

TECHNICAL SPECIFICATION:

Product Type	Manual Drum Trolley
Application	Plastic Drum for transport
Load	350kg
Rising Height	280mm
Dimension	900x820x11600
Net Weight	50kg



2 Ton Electric Pallet Stacker

TECHNICAL SPECIFICATION:

Product Type	Electric Pallet Stacker
Load Capacity	2 Ton
Lifting Height	2.3 Mtr
Min. Gantry Height	1805mm
Max. Raising Height	3010mm
Min. Fork Height	90mm
The Whole width	800mm
Fork Outer Width	680-330mm
Load Center	450mm
Fork Size	1150*150*60mm
Load Bearing Wheels	74*70mm
Steering Wheels	150*50AH
Battery Voltage	24V/65AH*2



2 Ton; 2-3Mtr. Semi- Electric Pallet Stacker

TECHNICAL SPECIFICATION:



Product Type	Electric Pallet Stacker
Load Capacity	2 Ton
Min. Fork Height from Ground	85 M
Max. Lifting Height	3010mm
Outside/Inside Fork width	640mm
Fork Length	1150mm
Overall vehicle length	1860mm
Overall vehicle width	780mm
Front Wheel Dimnesion	74*70mm
Load Center	450mm
Charge	12C15AH
Motor Power	12V 1.6kw
Battery Voltage	12V/120AH*2

2 Ton Fully Electric Pallet Stacker

TECHNICAL SPECIFICATION:

Product Type	Manual
Min Fork Height from Ground	85mm
Max. Lifting Height	2000mm
Low. Height from Door frame falls	2000mm
Outside/Inside Fork Width	640mm
Fork Length	1150mm
Overall Vehicle Length	2500mm
Overall Vehicle Width	800mm
Front Wheel	74x70mm
Load Center	800mm
Charger	24V/15AH
Battery Voltage Capacity	24x240AH
Motor Power	24V/2.2kw



Warehouse Electric Forklift

TECHNICAL SPECIFICATION:

Product Type	WH Electric Forklift
Lifting Capacity	2 Ton
Usage/Application	Warehouse
Type	Longitudinal Stacker
Height	5.5Mtr.



This electric stacker can be driven from the side which makes it very compact and worthy.

2 Ton; 2.5Mtr. Manual Hand Stacker

The Manual loading and unloading vehicle is a power-free, pollution-free, manual hydraulic lifting transport vehicle. It has the advantage of compact structure, flexible transportation, convenient maintenance etc. It is suitable for lifting, hoisting, and moving of goods in factories.

TECHNICAL SPECIFICATION:

Product Type	Manual Stacker
Maximum Working height	2500mm
Weight Capacity	2000kg
Load Center Distance	1500mm
Goods Fork Length	900mm
Pallet Fork Width Adjustment	350-850mm
Pallet Fork minimum Height	105mm
Minimum Bending radius	1450mm
Vehicle Length	1500mm
Vehicle Width	900mm
Vehicle Height	2002mm
Nylon Wheel Dimension	50x90mm
Net Weight	300kg



2 Ton; 1.6Mtr. Manual Hand Stacker

It is suitable for lifting and handling of goods, in factories, workshop & warehouse etc. The oil pump is integrally sealed, the large and small piston rods are chrome-plated, the structure is firm, and the descending speed can be controlled

Product Type	Manual Stacker
Maximum Working Height	1600mm
Load Capacity	2000kg
Load Center	550mm
Lifting height	1500mm
Minimum Fork Height	90mm
Fork length	86mm
Single Fork Width	160mm
Adjustable Fork width	540mm
PU/ Bearing	Φ78x80mm
Dimension	1350x680x2000mm
Net Weight	230kg



1 Ton Manual Hand Stacker

The oil pump is integrally seal, with large and small piston rod chromium plated strong structure. It is suitable for scattered parts and easy to maintain, thus adapting to market demand.

TECHNICAL SPECIFICATION:

Product Type	Manual Forklift
Maximum Working height	1600mm
Weight Capacity	1000kg
Load Center	550mm
Fork Height	Max.-1600, Min.-90mm
Fork length	90mm
Single Fork Width	100mm
Fork Overall width	230-730mm
Ground Clearance	23mm
Min. Turning Radius	1375mm
Front Wheel size	Φ50x90
Rear Size	Φ50x180
Dimension (LxBxH)	1600x700x1949mm
Net Weight	170kg

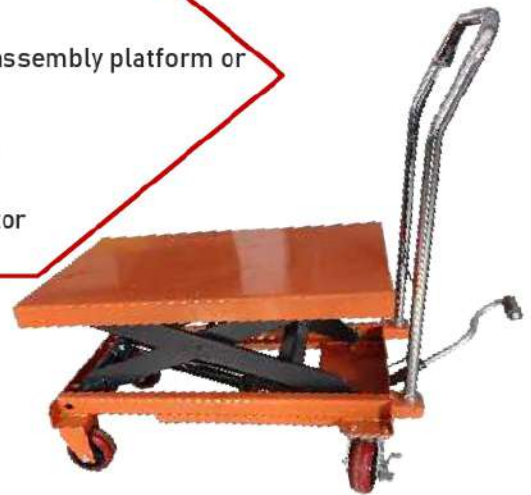


500kg Hydraulic Lift Table

This scissor-type high-lift truck, can load 350kg-1000kg, lifting height 800mm. The high-lift truck can be used not only for transportation, but also as a working platform.

- Single lift cylinder, more convenient for maintenance.
- The closed structure design of the fork head is strong and durable.
- The vehicle can be used as a manual transfer vehicle, lifting platform, assembly platform or workbench.
- The design of fast lifting oil cylinder improves work efficiency.
- When reaching a certain height, there are additional supporting legs to improve the stability of the vehicle.
- The design of the long handle keeps a safe distance between the operator and the vehicle body making the operation safe and comfortable.

Product Type	Scissor Type High Lift
Rated Load	500kg
Table Height	Max.-0mm, Min.-85mm
Table Length	1140mm
Table Overall Width	520mm
Single Fork Width	160
Net Weight	105kg



5 Ton Hand Pallet Truck

- Manual pallet truck with hand brake
- Equipped with hand brake, designed for parking and important in warehouse with slopped ground.
- The fork is made of high-strength alloy steel plate, with light weight and large-load bearing capacity.

TECHNICAL SPECIFICATION:

Product Type	Manual Pallet Trolley
Maximum Height of Platform	1900mm
Maximum Working height	85cm
Load Capacity	5000kg
Fork Height	Max.-205, Min-85mm
Fork length	1150mm
Single Fork Width	160mm
Fork Overall width	540mm
Front Wheel Size	Φ80x60
Rear Wheel Size	Φ200x50
Wheel Material	Polyurethane
Net Weight	85kg



1.5 Ton Scissor Hand Pallet Truck

TECHNICAL SPECIFICATION:

Product Type	Manual Pallet Trolley
Capacity	1.5 Ton
Maximum Height of Platform	1900mm
Maximum Working height	85cm
Load Capacity	3000kg
Fork Height	Max.-205, Min-85mm
Fork length	1150mm
Single Fork Width	160mm
Fork Overall width	540mm
Front Wheel Size	Φ80x60
Rear Wheel Size	Φ200x50
Wheel Material	Polyurethane
Net Weight	85kg



3 Ton Hand Pallet Truck

- Manual pallet truck with hand brake
- Equipped with hand brake, designed for parking and important in warehouse with sloped ground.
- The fork is made of high-strength alloy steel plate, with light weight and large-load bearing capacity.

TECHNICAL SPECIFICATION:

Product Type	Manual Pallet Trolley
Maximum Height of Platform	1900mm
Maximum Working height	85cm
Load Capacity	3000kg
Fork Height	Max.-205, Min-85mm
Fork length	1150mm
Single Fork Width	160mm
Fork Overall width	540mm
Front Wheel Size	Φ80x60
Rear Wheel Size	Φ200x50
Wheel Material	Polyurethane
Net Weight	85kg



Forklift Attachment & Accessories



Forklift Drum Attachment



2 Ton Paper Roll Clamp



Slab Clamp



Motorized Platform



Motorized Tri wheeler



Material Handling Equipment

TechMachi India LLP

Plot No-53, Sector-53, Phase-1 HSIIDC Kundli Sonipat Haryana 131028

Website: www.techmachi.in; Email: techmachiindialp@gmail.com

Mob. +91-7678272743, +91-9716000316